

7 PCB Information

This Section provides parts lists, circuit diagrams and component location information on the individual PCBs within the T2000 Series II radio.

The following PCBs are covered within this Section:

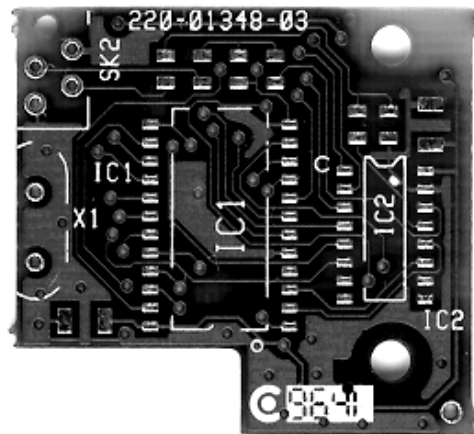
Section	Title	Page	Frequency (MHz)
7.1	T2000-100 RF PCB IPN 220-01331-02	7.1.1	220 to 270
7.2	T2000-200 RF PCB IPN 220-01202-10	7.2.1	66 to 88
7.3	T2000-300 RF PCB IPN 220-01314-01	7.3.1	136 to 174
7.4	T2000-400 RF PCB IPN 220-01204-11	7.4.1	175 to 225
7.5	T2000-500/-600 RF PCB IPN 220-01205-14	7.5.1	400 to 530
7.6	T2000-700/-900 RF PCB IPN 220-01289-01 IPN 220-01389-03	7.6.1 7.6.11	330 to 400
7.7	T2000-800 RF PCB IPN 220-01305-03	7.7.1	800 to 870
7.8	T2000 IF PCB IPN 220-01384-00	7.8.1	
7.9	T2000 TCXO/Tx Audio PCB IPN 220-01389-00 IPN 220-01389-02	7.9.1 7.9.7	
7.10	T2010 & T2015 HC05 Logic PCB IPN 220-01377-01 IPN 220-01377-02 IPN 220-01377-03	7.10.1 7.10.11 7.10.23	
7.11	T2020, T203X, T2040, T2050 & T2060 HC11 Logic PCB IPN 220-01344-02 IPN 220-01344-04	7.11.1 7.11.13	
7.12	T2010/T2030 Control Head PCB IPN 220-01319-01	7.12.1	
7.13	T2015/T2060 Control Head PCB IPN 220-01320-01	7.13.1	
7.14	T2020/40 /50 Control Head PCB IPN 220-01321-04	7.14.1	
7.15	T2035 Control Head PCB IPN 220-01322-03	7.15.1	
7.16	T2000 EMC Filter PCB IPN 220-01383-01	7.16.1	
7.17	T2000 Data Interface Decoupling PCB IPN 220-01388-01	7.17.1	

PCB Identification

All PCBs are identified by a unique 10 digit 'internal part number' (IPN), e.g. 220-01330-02, which is screen printed onto the PCB (usually the top side).

The last 2 digits of this number define the issue status, which starts at 00 and increments through 01, 02, 03, etc. as the PCB is updated. Some issue PCBs never reach full production status, and are therefore not included in this manual. A letter following the 10 digit IPN has no relevance in identifying the PCB for service purposes.

In the following diagram of the T2000-66 UART PCB, the IPN is 220-01348-03, (i.e. issue 03 of the PCB).



It is important that you identify which issue PCB you are working on so that you can refer to the appropriate PCB information.